

# INSTALLATION GUIDE - DOUBLE SIDED HANDLE

Handle x 2

Long Screw x 2

Backplate 1 x 2

Backplate 2 x 2

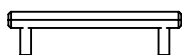
Allen Key x 2

Short Screw x 2

Grub Screw x 2

Fixing x 2

Rubber Disc x 4

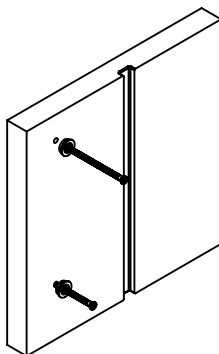


Note: Small fixing is found inside backplate 2 (grub screw holes)



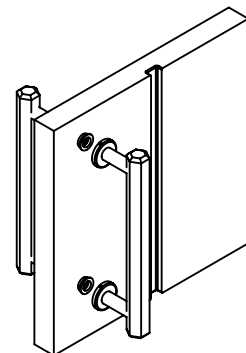
1. Unscrew the grub screws from backplate 2 and remove the fixing

2. Insert the long screws through the fixing and into the pre drilled holes



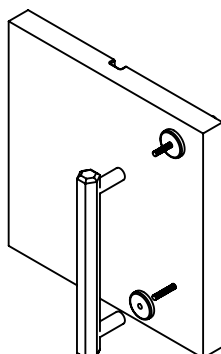
6. Slide the handle into the fixings

7. Tighten grub screws on backplate 2 to secure handle into place



3. On the other side, feed through backplate 1 through the protruding long screw.

4. Attach your handle to the long screws and tighten screw to secure handle and backplate into place.



\*on the other handle

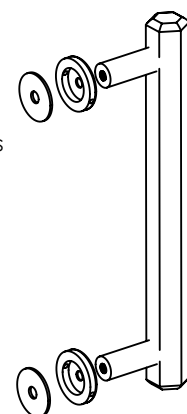
5. Feed the short screw through backplate 2 and into the handle

5. Tighten the screw so backplate 2 is firmly secure on the handle



NOTE: For glass double sided fixing, always apply the rubber discs first.

The rubber disc should always be against the glass first then the backplates.



# PUSHKA HOME