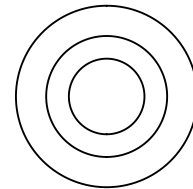
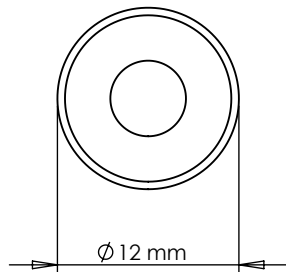
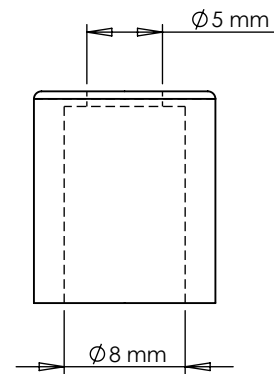
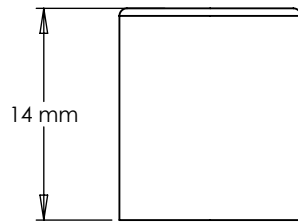


TECHNICAL SPECIFICATION - BLIND PULL



FINISHES



GOLD

CLEANING & MAINTENANCE

Wipe clean with warm water and a soft cloth. Avoid abrasive towels, sponges, cleaning sprays, bleach and hand sanitizer

NOTE

Protective lacquer to prevent oxidation and corrosion.

PUSHKA HOME