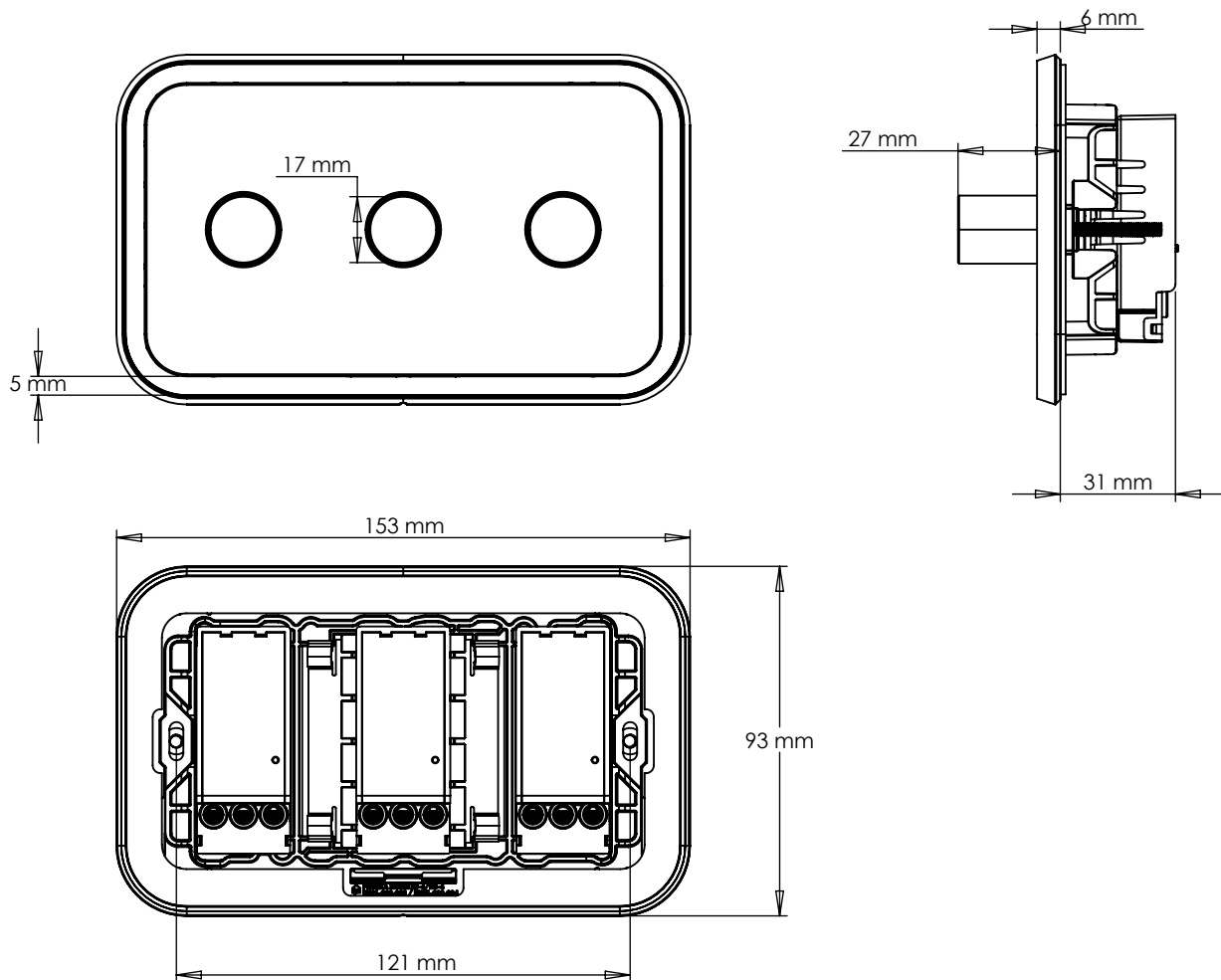


# TECHNICAL SPECIFICATION - 3 GANG DIMMER



## INCLUDED

2 x 25 mm M4 screw

## CLEANING & MAINTENANCE

Wipe with a dry lint free cloth. Avoid abrasive towels, sponges, cleaning sprays, bleach and hand sanitizer

## NOTE

3 GANG DIMMER SWITCH  
TWO WAY  
Trailing Edge & Leading Edge Phase Control  
240 V  
Mounting Box Depth 35 - 47 mm  
CE – Tested throughout Europe

## FINISHES



# PUSHKA HOME