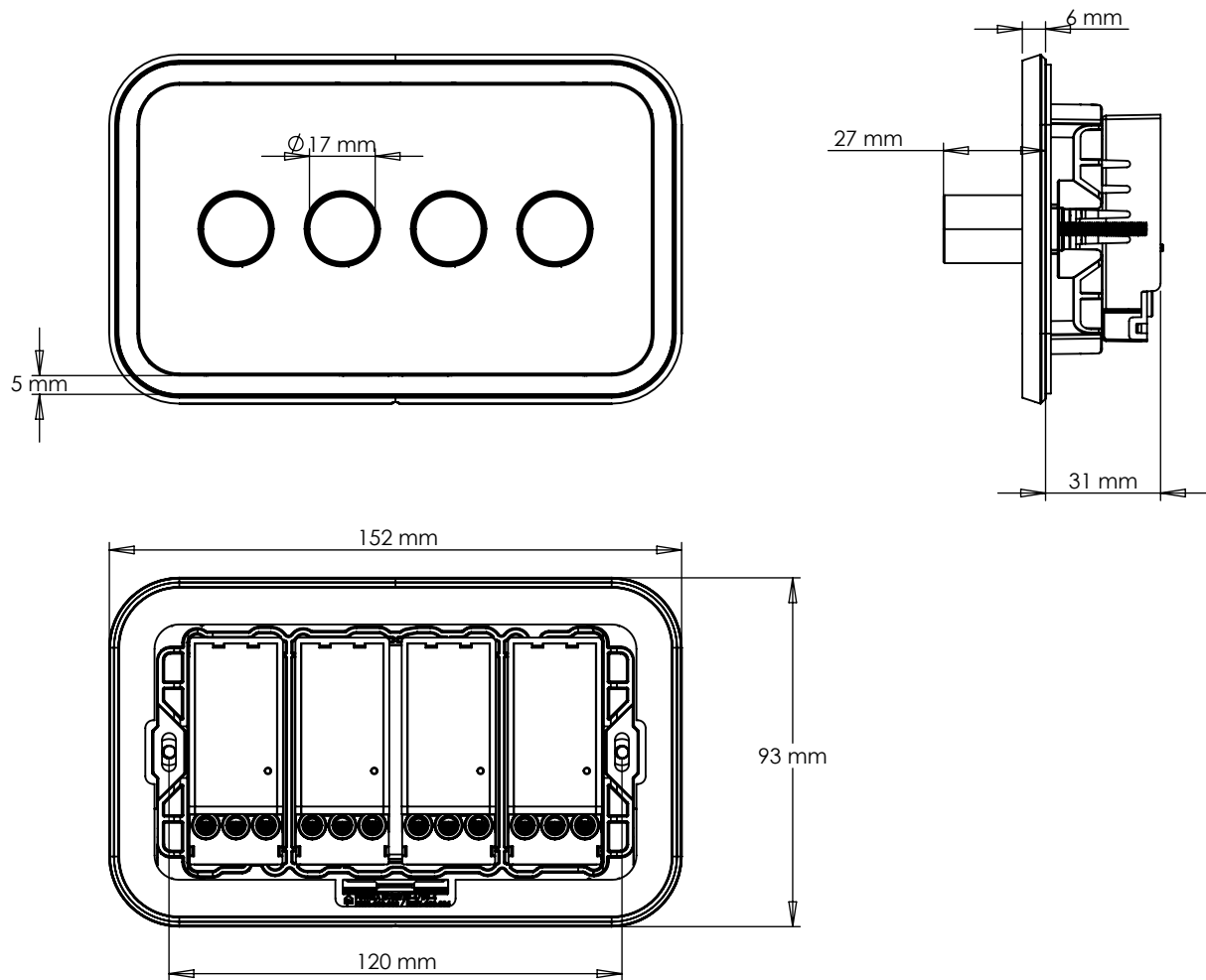


TECHNICAL SPECIFICATION - 4 GANG DIMMER



INCLUDED

2 x 25 mm M4 screw

CLEANING & MAINTENANCE

Wipe with a dry lint free cloth. Avoid abrasive towels, sponges, cleaning sprays, bleach and hand sanitizer

NOTE

4 GANG DIMMER SWITCH
TWO WAY
Trailing Edge & Leading Edge Phase Control
240 V
Mounting Box Depth 35 - 47 mm
CE – Tested throughout Europe

FINISHES



PUSHKA HOME