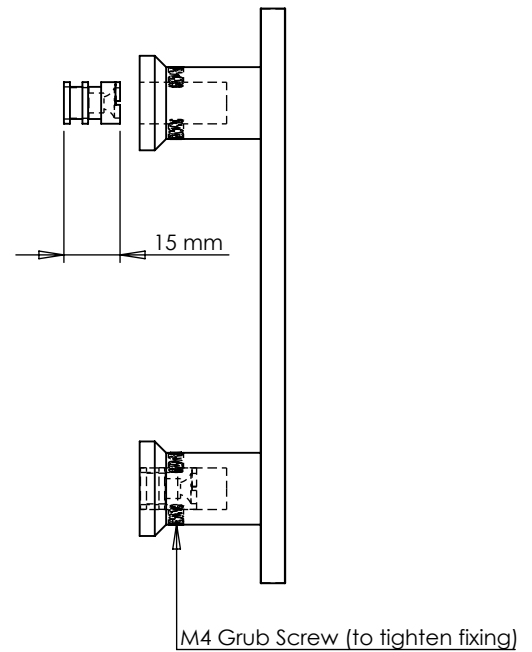
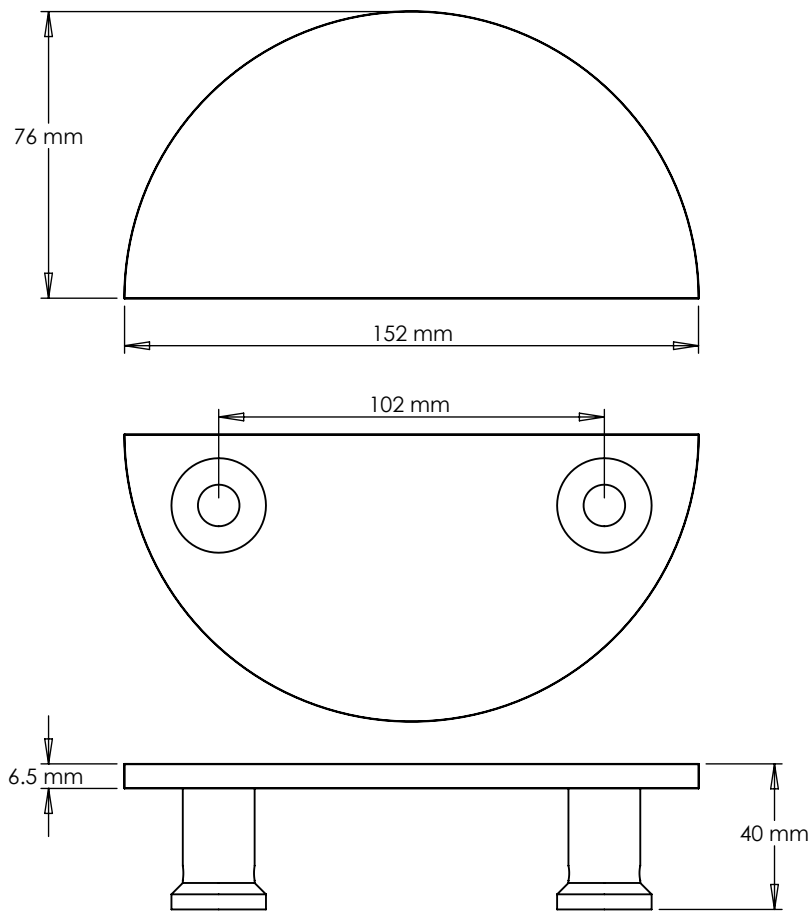


# TECHNICAL SPECIFICATION - HALF MOON - LARGE



## Minimum & Maximum Door Thickness Guide

If fitting to front of door / side by side:

Minimum door thickness: 16mm

Maximum door thickness: No Maximum

If fitting back to back / Double sided:

Minimum door thickness: 16mm

Maximum door thickness: 48mm

## INCLUDED

4 x 32 mm wood screw

2 x Bolt 70mm (back to back fixing)

4 x Leg sleeve fixings

8 x M4 grub screws

1 x Allen Key

## CLEANING & MAINTENANCE

Wipe clean with warm water and a soft cloth. Avoid abrasive towels, sponges, cleaning sprays, bleach and hand sanitizer

## NOTE

Supplied as a pair

Side by side or back to back fixing

Application for glass doors

Protective lacquer to prevent oxidation and corrosion.

## FINISHES



GOLD



BLACK



BRONZE



ANTIQUE

# PUSHKA HOME