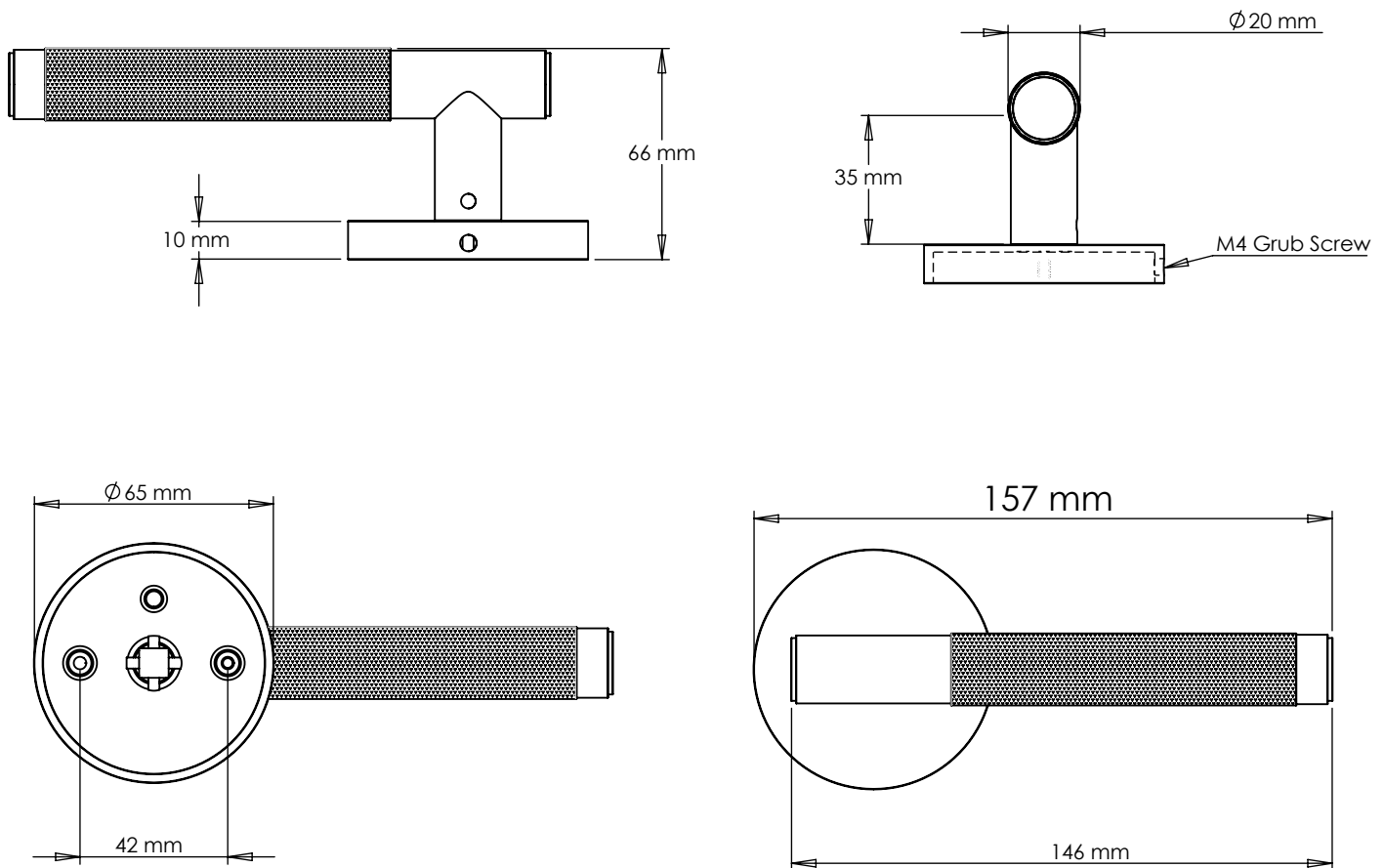


TECHNICAL SPECIFICATION - LEVER - KNURLED



INCLUDED

1 x pair of sprung door handles
2 x M4 x35mm through bolts
1 x 5mm x 5mm x 112mm square spindle
8 x 4mm woodscrews

CLEANING & MAINTENANCE

Wipe clean with warm water and a soft cloth. Avoid abrasive towels, sponges, cleaning sprays, bleach and hand sanitizer

NOTE

Suitable for interior doors only

Protective lacquer to prevent oxidation and corrosion.

FINISHES



PUSHKA HOME