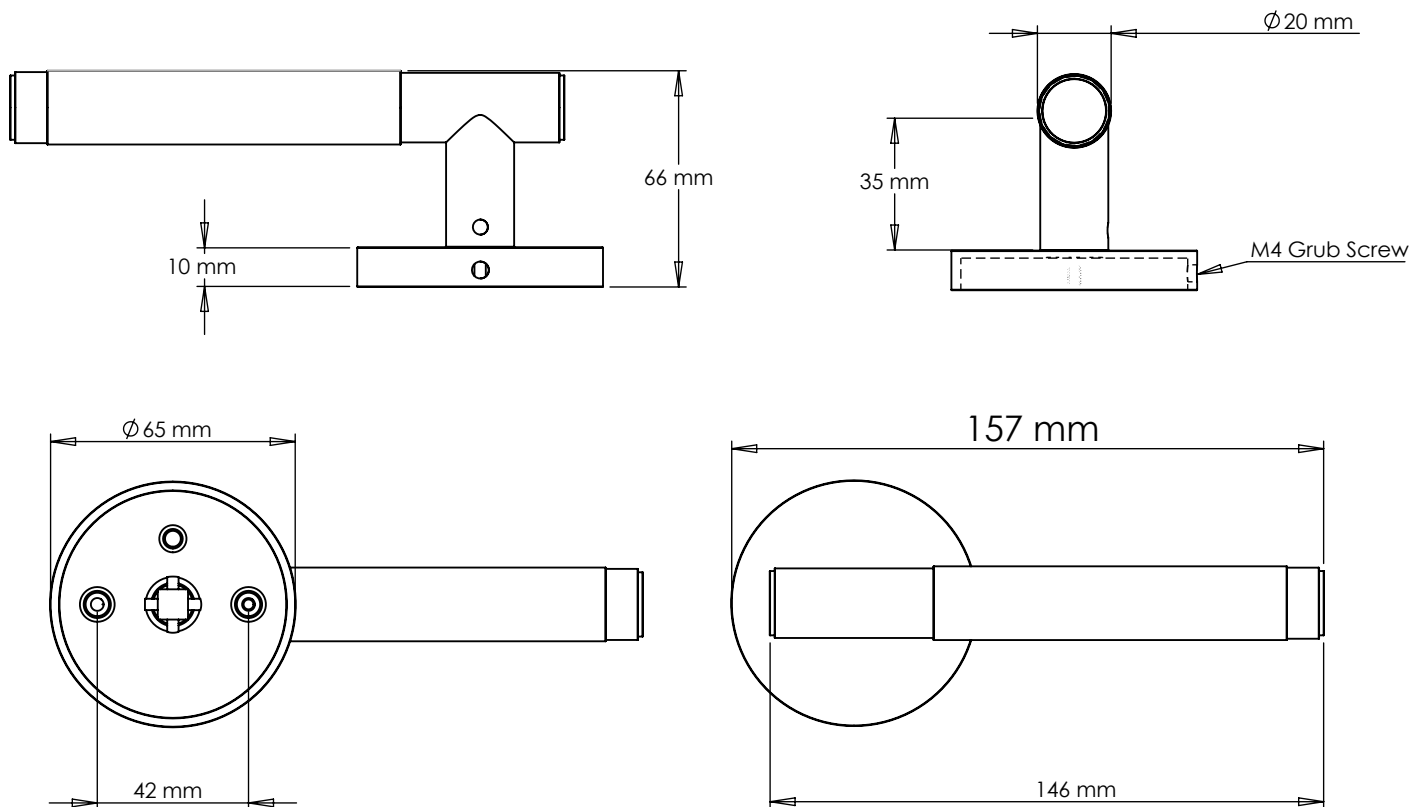


# TECHNICAL SPECIFICATION - LEVER - LEATHER



## AFTERCARE

We recommend using some leather natural beeswax-based conditioner and a soft cloth. First, apply a very light coat of conditioner with the cloth or your fingers to the leather and gently rub in a circular motion.

Leave your leather to absorb the conditioner - this can take between five and twenty minutes. Once dried, buff with the soft cloth until your leather has a desired shine. We recommend repeating the process around every six months.

Please note, our leather is not water resistant and may stain when wet. If it does get wet simply wipe off excess water and allow to dry naturally.

## INCLUDED

1 x pair of sprung door handles  
2 x M4 x35mm through bolts  
1 x 5mm x 5mm x 112mm square spindle  
8 x 4mm woodscrews

## CLEANING & MAINTENANCE

Wipe clean with warm water and a soft cloth. Avoid abrasive towels, sponges, cleaning sprays, bleach and hand sanitizer

## NOTE

Suitable for interior doors only  
Protective lacquer to prevent oxidation and corrosion.  
All hides are veg-tanned with natural materials and dyes, with no impact on our waterways, giving our oceans the respect they deserve. Highly durable and made to last, our leather range only gets better with age

## FINISHES



# PUSHKA HOME