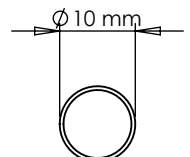
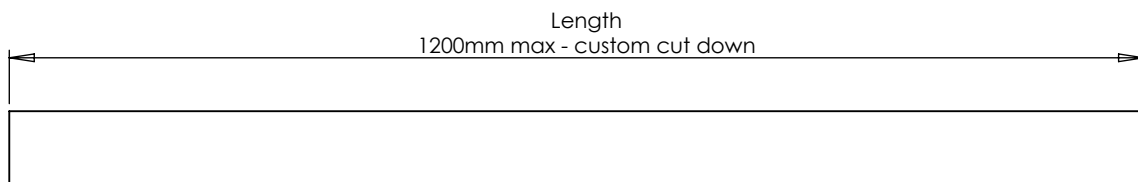
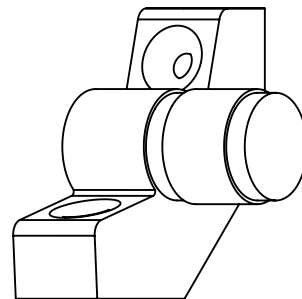
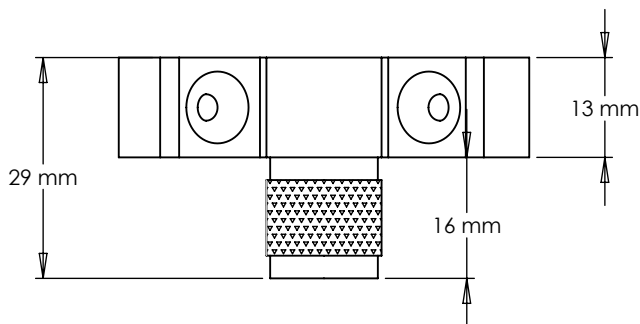
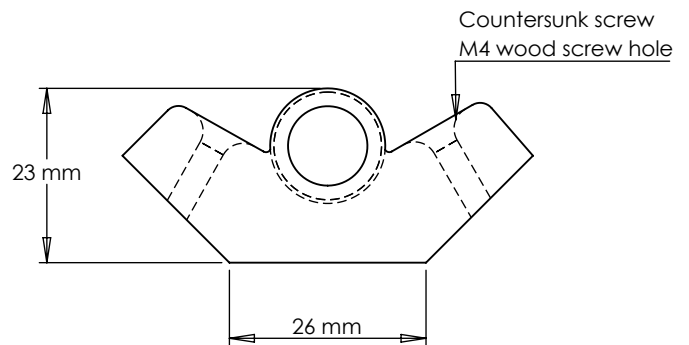
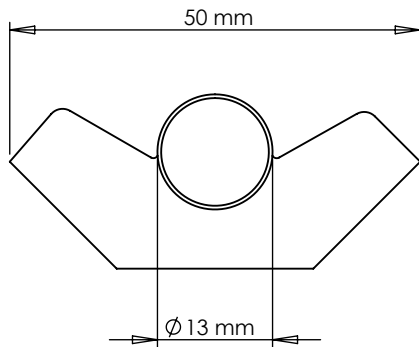


TECHNICAL SPECIFICATION - STAIR ROD - KNURLED



INCLUDED

4 x 30 mm M4 wood screw (per stair rod)

CLEANING & MAINTENANCE

Wipe clean with warm water and a soft cloth. Avoid abrasive towels, sponges, cleaning sprays, bleach and hand sanitizer

NOTE

Protective lacquer to prevent oxidation and corrosion.

FINISHES



PUSHKA HOME