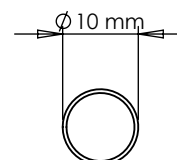
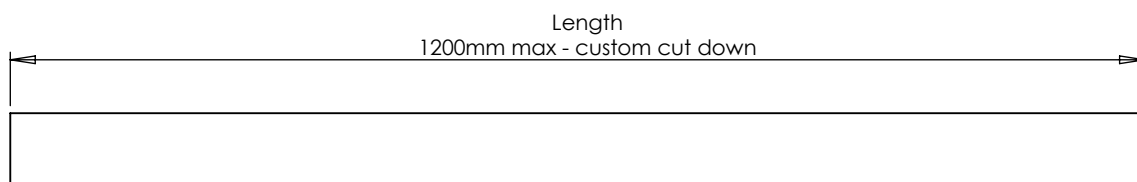
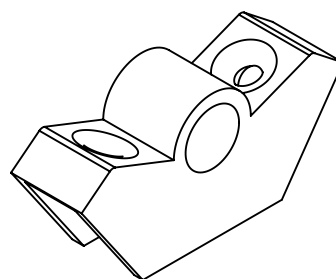
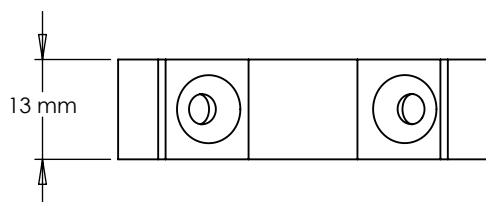
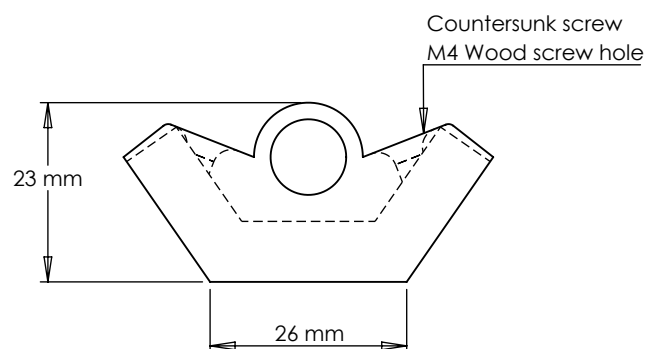
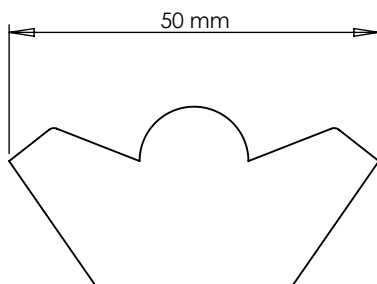


# TECHNICAL SPECIFICATION - STAIR ROD - PLAIN



## INCLUDED

4 x 30 mm M4 wood screw (per stair rod)

## CLEANING & MAINTENANCE

Wipe clean with warm water and a soft cloth. Avoid abrasive towels, sponges, cleaning sprays, bleach and hand sanitizer

## NOTE

Protective lacquer to prevent oxidation and corrosion.

## FINISHES



# PUSHKA HOME